

2021-2022

ANNUAL REPORT



OUR COMMUNITY'S HEART, WHERE EVERYONE BELONGS

7 PROSPECT STREET, PASCOE VALE 3044

ABN: 45 620 743 392 | INC NO: A0024700T



TABLE OF CONTENTS

Vision & Mission	3
Committee of Governance Members	4
Staff Members & Volunteers	5-6
Leadership Report	7-9
Treasurer's Report	10
Activity & Course Participation	11
Activity & Course Feedback	12-13
Volunteer Coordination	14-15
Activity & Course Reports	16-23
Pascoe Vale Food Collective Auspice Report	24-26
Community Group Reports	27-28
Events & Partnerships	29-30
Acknowledgements	31
Financials	Attached

SUPPORTED BY CITY OF MORELAND

Sussex Neighbourhood House is located on the land of the Wurundjeri Woi Wurrung people of the Kulin Nation. We acknowledge Aboriginal and Torres Strait Islander peoples as custodians of the land and waters on which we operate and respect their unique ability to care for Country and deep spiritual connection to it. We honour Elders past and present whose knowledge and wisdom has ensured the continuation of culture and traditional practices.

Our community is made up of diverse cultures, beliefs, abilities, bodies, sexualities, ages and genders. We are committed to access, equity, participation and rights for everyone: principles which empower, foster harmony and increase the wellbeing of an inclusive community.

VISION & MISSION

Just over 30 years ago, the Sussex Neighbourhood House (SNH) was officially opened in 1991 by the then Premier of Victoria, Joan Kirner, and Hazel Hawke (wife of the local federal member and Prime Minister, Bob Hawke) at 235 Sussex Street, Pascoe Vale.

Twenty-six years later, in January 2018, we moved into the new Moreland City Council purpose built facility at 7 Prospect Street, Pascoe Vale. Through the services that SNH provides, we strive to make a positive difference in people's lives. We are an incorporated association, with membership from the local community.

The activities and programs we provide are developed in response to the needs of the community. Our brand is built not from our communication materials or our mission statement, but rather by the day to day interactions we have with community.

We are a not-for-profit organisation where funds are combined with a strong staff and volunteer input to ensure maximum benefit to our diverse community.

Our funding support comes from a range of funding agencies, including Dept. of Health and Human Services, Dept. of Education & Training, and Moreland City Council. We operate to our Constitution, a three year Strategic Plan, and the Neighbourhood House's Good Practice Standards.

Our values:

We value diversity, accessibility and inclusiveness

We value knowing our community

We value supporting and empowering each other

We value learning for everyone

We value community ownership and involvement

We value environmental sustainability.

SHARE | LEARN | ENJOY | GROW

OUR VISION

Our community's heart, where everyone belongs.

OUR MISSION

Sussex Neighbourhood House provides a relevant hub that supports, engages, connects, and excites our community through lifelong learning, social activities and by responding to community needs.



COMMITTEE OF GOVERNANCE

COMMITTEE MEMBERS 2021-2022



MRS LARA DENES
CHAIRPERSON



MS ANGELA GIOULEKAS
SECRETARY



MS ELISABETH TA
TREASURER



MS RUTH ROBLES MCCOLL
DEPUTY CHAIRPERSON



MR PREET TOKI
COMMITTEE MEMBER



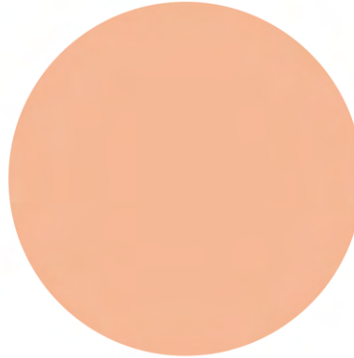
MRS CLAIRE MARTIN
COMMITTEE MEMBER



MS YVETTE JONES
COMMITTEE MEMBER



MR JOE CASSAR
GENERAL MANAGER
EX-OFFICIO



MR CARL ROBERTS
COMMITTEE MEMBER
RESIGNED APRIL 2022

STAFF MEMBERS & VOLUNTEERS

GENERAL MANAGER

Joe Cassar

PROGRAM, VOLUNTEER & EVENTS COORDINATOR

Kylie Gerber

FINANCE OFFICER

Alfina Astuto

OFFICE COORDINATOR

Alex Fletcher-Hoerner*

ADMINISTRATION OFFICER

Huma Mittro

ADMINISTRATION SUPPORT

Rachel Currao

ACFE COORDINATOR

Louise Pacor*, Campbell Rider

YOUTH COORDINATOR

Campbell Rider

YOUTH FACILITATOR

Cosmo Polke

CLEANER

Ray Preece*, Anthony Vento

CAREER PLANNING

Kylie Gerber

CLAY ART TUTOR

Ursula Dutkiewicz

COMPUTER & TECHNOLOGY PROGRAMS

Dinusha Perera, Annie Ali

CREATIVE MOVEMENT & DANCE

Simone Litchfield

CREATIVE WRITING

Anna Fern

DISABILITY SUPPORT & BUS DRIVER

Tiffeny Yong, Amelia McQueen

ENGLISH AS AN ADDITIONAL LANGUAGE

Asha Prakash*, Dinusha Perera, Marzia Niaz,
Annie Ali, Hina Hussain

FLORISTRY

Cherie Roe

KEYBOARD

Cassie Farrugia, Olivia Zuber

HOMEWORK CLUB

Campbell Rider, Cosmo Polke

ITALIAN LANGUAGE

Giovanna Palma

INTRODUCTION TO COMMUNITY SERVICES

Abraham Polatkesen

KIDS CREATE

Tiffeny Yong

KIDS SEWING

Fiona Figliomeni

KNITTING

Christine Hill

LET'S SHOOT

Cosmo Polke

LITTLE ARTISTS

Tiffeny Yong

MIXED MEDIA

Tiffeny Yong

SCALLYWAGS PLAYTIME

Rose Van Herk, Rachael Singh

SEWING

Janette Bowles

SKYLARKS CHOIR

Phil Hudson

SPANISH LANGUAGE

Cristina Hernandez Alonso

TAI CHI

Averil Lewis, Alfred Ng

UKULELE FOR ADULTS

Phil Hudson

WATERCOLOUR & DRAWING

Ted Dansey

YOGA

Simone Litchfield, Melisa Chabierski, Simona Schmidt

ZUMBA

Yulay Perez

SUSSEX NEIGHBOURHOOD HOUSE VOLUNTEERS

ART SPACE

Jennifer Burnett & Julie Hartnett

BOOK CLUB & SUSSEX FAMILY HISTORY GROUP

Janette Bowles

CLAY ART & SEWING FOR KIDS

Michelle Giaccotto

IN HOUSE ARTIST

John Whittam

KIDS CREATE

Karina Walsh

LITTLE ARTISTS & SPANISH LANGUAGE

Carolina Huerta

PASCOE VALE MAKERS & MENDERS

Anne Newton

OFFICE VOLUNTEERS

Irene Wloch, Zeynep Serbetci,
Nivy Philips, Maxie Tsiavos,
Gabrielle Baker

ENGLISH AS AN ADDITIONAL LANGUAGE

John Wloch

MOVIES & MUSIC

Milton Eliadis & Rachel Currao

REPAIR CAFE - VOLUNTEERS & REPAIRERS

Anne Newton, Kylie Gerber,
Garry Jewell, Eleesa Jewell,
Charie & Simone Nancarrow,
Danny & Karen Ellis, Joe Cassar,
Glenn Newman, Tamara Russell,
Margaret Riley, Lyn McFay, Jan
Dansey

SEWING FOR KIDS

Michelle Giaccotto

STUDENT PLACEMENT

Ginny Jsu, Nikki Fowder, Ben
Yonson

SCHOOL HOLIDAY WORKSHOPS

Lara, Georgiana & Luca Denes

2021-2022 LEADERSHIP REPORT

CHAIRPERSONS REPORT

It is with pleasure that I submit my first report as Chairperson of the Sussex Neighbourhood House (SNH).

It has been a very busy 12 months for the Committee of Governance as we built on the work that Joe and his team started coming out of the Covid lockdowns.

We buckled down and worked hard to cement our strategic priorities for the coming 3 years. Just like in all previous years, and staying true to the SNH Mission and Values, our main goals are to connect community, create opportunity and support people.

With an aspiration to support numerous generations to come while balancing the reality of minimal funding our 2022 - 25 Strategic priorities include: Youth, disability, and young families and children.

We also worked with the operational team to complete a pricing review. In these uncertain economic times it is important for an organisation such as ours to maintain a budget that allows us to support the community at the same time as being accessible to everyone in our community.

Our full suite of policies also got a once over this year! We researched and investigated other organisations and Neighbourhood Houses to ensure that our policies represent best practice in the area and that they all meet our governance and funding body requirements.

We have started working towards succession planning on the Committee of Governance by actively recruiting interested locals as well as targeting skills around finance and event management.

Another major part of our role as a committee of governance is to liaise with the Moreland City Council and advocate for SNH to be the flagship of the Pascoe Vale Community precinct.

We support a number of organisations that use all areas of the Pascoe Vale Community precinct and we take our responsibility as leaders in this community area very seriously. We strive to maintain a friendly and welcoming environment for everyone coming to the precinct and we encourage Moreland City Council to work alongside us for the betterment of the whole Pascoe Vale community.

I would like to thank Joe, the staff, facilitators and all the volunteers of SNH. We could not produce the events, classes and groups without the hard work and dedication of our staff and volunteers.

**Chairperson,
Lara Denes**

2021-2022 LEADERSHIP REPORT

GENERAL MANAGERS REPORT

The last 12 months at Sussex Neighbourhood House (SNH) has been a busy time of program review, renewal, and growth. Following the lengthy Melbourne Covid-19 lockdowns of 2021 and 2022, it has been encouraging to see people returning to the house seeking to connect with others and share experiences. Our participation rates have steadily climbed and from a standing start in February 2022, are now matching participation levels experienced pre Covid-19.

The past year has seen operational reviews undertaken across all program offerings. These reviews have included the Moreland City Council subsidised Inclusive Arts program for people with disabilities, Adult Community and Further Education courses (ACFE) and the general group program.

To further contemporise and improve our 25-year Inclusive Arts program, the program has been revamped. It is now in a new day timeslot with an emphasis on supporting clients to access their NDIS plans. Our ACFE program has seen a significant increase in participants enrolling in new and revised English language and Digital literacy courses. Also, we have successfully experimented with new offerings, including youth-oriented courses such as Introduction to Community and Youth Services, and Introduction to Screen and Media. As well, we have implemented a new class, Sewing for Enterprise, with a focus on sustainability.

Careful consideration has been given towards ensuring that our general group program has a good mix of new and old and is priced both competitively and sustainably. For example, we have introduced Baby Massage, Spanish

language classes and a social group, Music and Movies, while continuing with the Skylarks Choir and Yoga in its many variations as well as a range of other programs too numerous to re-count in this report.

In keeping with our Strategic Priorities, we have successfully applied for grants which directly target young people and people with disabilities. This has included the Victorian State Government's three-year funding for Youth Engage and the annual Youth Fest event. In addition, VicHealth has funded Jumpstart with a focus on young people with disability.

After two years of uncertainty, it has been terrific to see the return of SNH community events. The first event was the 2021 End of Year celebration and the Inclusive Arts reunion. Both held following the end of Covid lockdowns. Earlier this year, a volunteer morning tea was held acknowledging the significant contribution of volunteers to the house. Finally, with financial grants from the Moreland City Council, we held two Covid Safe events; the Winter Solstice, celebrating our rich cultural diversity and the Older Italian Booster event co-organised with the Pascoe Vale Puglia Club.

CONTINUED PG 9

2021-2022 LEADERSHIP REPORT

GENERAL MANAGERS REPORT CONT.

The importance of environmental sustainability is reflected locally by the action and commitment of a growing number of SNH groups. The Pascoe Vale Food Collective, auspiced by SNH, has continued this year in distributing low waste, bulk buying dry food to the local community. Our weekly Craft Circle, Makers, Menders & Basketry, and Sewing groups, as well as our monthly Learn it Make it Mend it and the Pascoe Vale Repair Café all epitomise a commitment to repair, recycling and the reduction of waste.

Partnering with local community groups and initiatives has also gone through a renaissance this year. Some examples have included:

- The Strathmore Men's Shed have been wonderful in providing us with useful custom designed woodwork.
- The Coburg and Pascoe Vale Men's Shed meets monthly at the house and is a strong supporter of the Repair Café.
- The Residents Improving Secondary Education in the North conducts public meetings at the house and is successfully building momentum and support across Moreland.
- The Glenroy Specialist School has provided support for SNH grant submissions and is partnering with us in disability youth program development.
- Glenroy College is partnering with us in delivering innovative in-reach youth programs.

In addition to all these achievements, we have upgraded our social media and website, produced quality grant submissions and improved on our administrative processes. All these

achievements would not have been possible without the commitment and teamwork of SNH Committee of Governance, office staff, volunteers, group facilitators and tutors.

General Manager,
Joe Cassar



TREASURER'S REPORT

It is an absolute privilege that I am writing this year's Treasurer's Report. I would like to present the audited financial reports for the year ending 30 June 2022 for Sussex Neighbourhood House. 2022 has been a tough year but it has shown the House's resilience and ability to thrive through some tough times.

The first quarter (1 July 2021 to September 2021) was rather challenging as we saw Melbourne Lockdown 6, restrictions were in place and leaving us wondering if this would be the last lockdown. The staff team has worked diligently to ensure the house followed restrictions to keep everyone safe as well as deliver services to the community.

2022 saw the House showing a small loss, which was expected, as we maneuvered through constantly changing Covid-19 restrictions/rules. We saw the end of the Covid grants, which was the main reason for the loss when compared to prior years. The House was able to generate a respectable \$522,466, which was amazing given the House was trading with restrictions and trying to encourage people back to the House after years of lockdowns.

With the House back to running programs and providing services to the community again, cost naturally increased. Materials and sub-contractor fees increased substantially which can be interpreted as a good sign; this meant people were coming back to the House and the House was able to provide services to the community. Our employee benefit expenses saw an increase this year as well from \$307,122 to \$358,925, with no Jobkeeper to assist, the House had to manage their expenses. When looking at total expenses, the total increase from prior years was 1.6% which shows that the House did a marvellous job managing its expenses.

The Balance Sheet is in a strong position, with total assets of \$374, 281, \$354,751 of which are cash and cash equivalent. Total liabilities are \$149,324 which includes \$21,572 provisions for annual leave and long service leave, \$89,305 in income in advance or grants in advance.

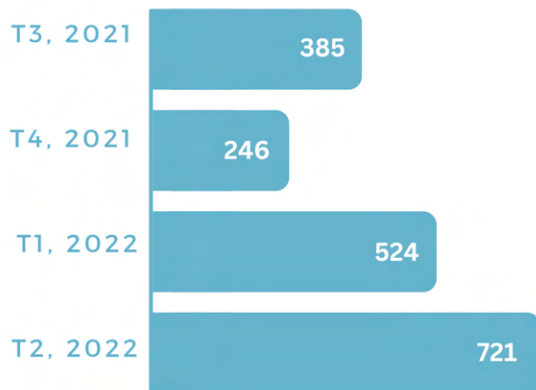
Well done team!!

**Treasurer,
Elisabeth Ta**



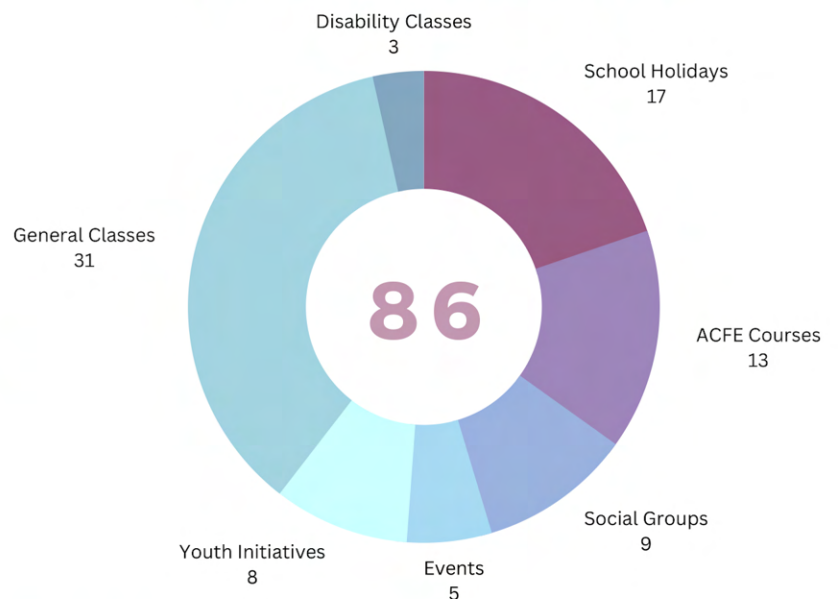
ACTIVITY & COURSE PARTICIPATION

2021-2022 ENROLMENTS



Enrolment data not inclusive of events and youth initiatives.

RANGE & NUMBER OF PROGRAM OFFERINGS



SATISFACTION SURVEY FEEDBACK

Surveys are provided to attendees at the end of each term to gauge participant satisfaction of the following:



**TUTOR/
FACILITATOR**



**COURSE/
ACTIVITY**



**CUSTOMER
SERVICE**

An overall satisfaction rating of 4.5/5 for the year.



Of the 725 participants surveyed, 264 provided feedback.



Survey data not inclusive of disability art programs, offsite courses, youth initiatives, school holiday activities, events, and Autism Support Group.

ACTIVITY & COURSE FEEDBACK

STUDENT FEEDBACK

Smartphones, Tablets & Computers for Absolute Beginners

"Doing Smartphones, Tablets and Computers has given me the start, confidence and knowledge to use my smartphone and many of the functions with ease. Not just the ability to make calls.

The class offers a hands-on approach with the facilitator working one on one when required. I got the answers to questions and learnt much more. I now have an understanding of the terms and language used when entering the world of smartphones, computers and technology.

Prior to this class, I experienced a lot of frustration, feeling inept, while always knowing I needed help to keep up with a changing world.

Thankfully, finding this class and being in a class with other people like myself helps immensely. I found the facilitator very knowledgeable, patient and friendly.

I had no awareness that the local community provided such services and would like to thank Sussex Neighbourhood House and Moreland City Council for this opportunity, support and friendly environment.

It was a pleasure to be part of a class who welcomed me and gave me help when needed. To meet and be in a class with people from my community gave me a sense of belonging. I met and made new friends."

Anne,
participant

Smartphones, Tablets & Computers for Absolute Beginners

"A great course. A great facilitator. The tutor has breadth of knowledge. Goes at a slow pace which is good as there is so much information to absorb. Can't believe how consumers buy iPhones and do not know how to use them. Very professional in her approach to participants of the course."

Margaret,
participant

Digital Skills for the Modern Workplace

"I am 75 and have been attending on Mondays for the Digital Skills classes at the warm, friendly Sussex Neighbourhood House. It has been an excellent class, I have learnt to set up Excel, Publisher, and make very fancy Power Point presentations. Dinusha is an organised and patient teacher and I have learnt that buttons and arrows on my laptop can do amazing things. I am so glad I did this course, I now have a lot more understanding of computers.

It is never too late to learn."

Rosie Finn,
participant

ACTIVITY & COURSE FEEDBACK CONT.

STUDENT FEEDBACK

Art Space

"The Art Space program is so lovingly and efficiently run, with space for all sorts of creatives. Support is always there if you want it but is never pushed on you. I have felt comfortable and included all through. Because students come with their own projects to work on, it gives me a chance to learn from them. It's like having a lot of mini teachers all in one place. I can experiment and just play at art, which is what I was looking for. Jen, the facilitator is a legend of diverse creativity. She is very willing to share her knowledge and makes everyone feel welcome."

Art Space participant

Digital Skills for the Modern Workplace

"The course has opened up a world of opportunities. Dinusha has taken the fear away from technology and introduced me to all its possibilities."

Claudia LoPriore, participant

Clay Art for Kids

"My daughter loves the class and looks forward to this every week. The pride she has showing us (parents) is a pleasure and makes us smile."

Joe, participant's parent

Ukulele Intermediate

"Sussex Neighbourhood house is a wonderful community resource. It is a beautiful space for local people to enjoy, and I'm always made to feel welcome there. I've made many friends and hope to continue visiting."

Deb,
participant

Tai Chi Beginners

"The minute I walked through the door I was approached by a most friendly lady in Irene, (and I haven't met all the other staff) but the ones I've met have been very nice! And I find the vibe in the Community House is just so peaceful and the décor and colours are so relaxing."

Wendy,
participant

Spanish

"Learning Spanish at Sussex Neighbourhood House has been a wonderful experience. I have wanted to continue learning the language and was so happy when I discovered an opportunity to do so close to home. The class is all that I hoped it would be."

Julie, participant

VOLUNTEERS

Sussex Neighbourhood House would sincerely like to acknowledge and thank all of our volunteers for their significant contributions to the House. SNH relies on the contribution of time and knowledge from our volunteers to make the place run so smoothly.

We have been very lucky at SNH to have Volunteers return after Covid-19 and new volunteers join us. We appreciate that this has not been the experience of many other organisations.

We would like to say a massive 'Thank You' to all volunteers for your support of the House. Also, a big thank you to the Hume Moreland Volunteer Coordinators Group for the ongoing resources and peer support provided.

Volunteer Coordinator,
Kylie Gerber

VOLUNTEERING IS A GREAT WAY TO GIVE BACK TO THE COMMUNITY, SHARE A SKILL SET AND HELP OTHERS, BUT YOU ALSO GET A LOT BACK - NEW FRIENDS, NEW SKILLS AND NEW PERSPECTIVES.

JENNIFER BURNETT, ART SPACE FACILITATOR

MY EXPERIENCE AS A VOLUNTEER AT SNH IS AMAZING. I'VE HAD THE OPPORTUNITY TO WORK WITH VERY COOPERATIVE AND FRIENDLY COLLEAGUES. IT IS A WONDERFUL LEARNING EXPERIENCE FOR ME. I GET TO LEARN A LOT OF NEW THINGS.

NIVY PHILIPS, OFFICE VOLUNTEER



RACHEL & MILTON

Ready for a David Bowie themed Movies & Music



FIONA & MICHELLE

Sewing for Kids tutor (Fiona), and volunteer (Michelle)



NIVY & IRENE

Office Volunteers

VOLUNTEERS CONT.

IN-HOUSE ARTIST, JOHN WHITTAM



Sussex Neighbourhood House has a long history of providing space and support for artists. We have been honoured and extremely privileged to have John Whittam as our In House Artist. John has been a regular presence in the Community Hub painting his many portraits, including the wonderful vision of the building. Currently, we have a selection of John's artwork lining our walls and welcome the community to visit the House to see John's work.

Volunteer Coordinator,
Kylie Gerber



PROGRESS PHOTOS OF THE BUILDING BEING PAINTED

ACTIVITY & COURSE REPORTS

ADULT COMMUNITY AND FURTHER EDUCATION PROGRAM REPORT - ACFE/LEARN LOCAL

The final semester of 2021 during Covid-19 lockdowns was obviously a difficult time for our ACFE program, but our capable tutors were able to transition to online teaching. Keeping up student engagement and taking new enrolments was challenging, particularly as online learning requires access to devices and a proficiency with technology that many of our learners struggle with.

Nonetheless, 2022 has been a year of renewal for our ACFE offerings. Our ACFE English as an Additional Language (EAL) programs have seen the most growth in the new year, with courses now being delivered onsite at three local primary schools. In addition to St. Dominic's Primary School, with which we've had a partnership for a number of years, Glenroy West and Belle Vue Park Primary Schools have begun hosting free English language classes for parents. These classes have proven to be immensely popular with parents at the schools. Our digital literacy classes have been revamped with a broader focus on devices such as smartphones and tablets. We have also added a new class, 'Sewing for Enterprise', to support the community's commitment to sustainability issues and to promote work opportunities in this area.

We welcomed two new tutors, Annie and Hina, to the team to support EAL and Digital Literacy classes both onsite and at the primary schools.

Sussex Neighbourhood House has continued to develop new courses including Introduction to Community Services, and Let's Shoot: Introduction to Screen and Media. These classes have succeeded in

engaging younger learners, a traditionally difficult cohort to access. From community work to filmmaking, our ACFE program continues to equip learners of all ages with new skills for work, life and further study.

Over the coming months, tutors and staff will also be undertaking the task of digitising and centralising ACFE teaching resources in order to launch a Learning Management System to be used by trainers and students. In addition to future-proofing our program delivery for lockdowns and other disruptions, online classroom materials will enhance the flexibility of our teaching and will enable students with competing commitments to engage via a hybrid model.

**ACFE Coordinator,
Campbell Rider**



ACTIVITY & COURSE REPORTS CONT.

A LEARN LOCAL TUTOR'S REPORT

The Covid-19 pandemic impacted on every aspect of our modern lives including teaching and learning. During 2020-21, both me and my students were challenged by the online environment. Even though we adapted quite well to the new platform, returning to regular face to face learning was definitely a better learning process with more positivity, interaction and collaborative learning.

SMARTPHONES, TABLETS & COMPUTERS FOR ABSOLUTE BEGINNERS

Nowadays smart phones and smart devices are in the hands of almost everyone. This 10-week course helps build the skills and confidence required to use smart phones, tablets and computers. At the start of the course participants often reported how frustrated and helpless they felt when using their mobile phones, iPads and computers. Over the weeks with improved confidence, their perceptions of using technology have changed in a positive way and many are now willing to accept smart devices as part of their everyday life.

DIGITAL SKILLS FOR THE MODERN WORKPLACE

An intermediate-level computer course aimed at further developing skills in using workplace computer software including MS Office applications, Google Drive and the Zoom platform. All participants in this class started with foundation skills. Their goal was to gain further confidence and enhance their current skills. They developed a deep understanding of computing essentials and have gained the confidence they needed.

ENGLISH LANGUAGE

A diverse class with students from China, Turkey, Sri Lanka, Iran, Italy, Bulgaria, Ukraine and Malaysia who are passionate about improving their English and connecting with the community. These students have become an invaluable support for each other. Their motivation in learning is amazing and this helps me challenge their limitations. It is a privilege to work with such supportive and enthusiastic learners and I am grateful to be a part of the SNH.

Tutor,
Dinusha Perera



 **Learn
Local**
learnlocal.org.au

ACTIVITY & COURSE REPORTS CONT.

YOUTH PROGRAMS

Each year the number of young people 12-25 living in Pascoe Vale and surrounds increases. That's why 2022 has seen Sussex Neighbourhood House (SNH) increase our focus and effort in young engagement. We have launched training courses in screen and media, school holiday activities including chess and video games, expanded our homework club program to support local secondary students, and reached out to local schools to run activities onsite.

Supported by a Victorian Government Youth 'Engage' Grant, which covers the period from 2022 - 24, the project is developing new programs and activities to engage and strengthen the social inclusion and community involvement of young people in our local area.

This grant also builds on our homework club program, which began in 2021 and continues to receive funding from the Australian Communities Foundation. This program moved online in Term 3, 2021 due to the lockdown, but the online mode has proven to facilitate greater student engagement and enabled more volunteers to get involved due to its flexibility. As a result, the program has remained online only. We continue a partnership with Australian Catholic University to provide volunteer tutoring opportunities to their undergraduate students, and have begun a similar partnership with the University of Melbourne's School of Education.

We have provided intensive VCE revision lectures in chemistry and biology across 2021 and early 22. Delivered online as well as in person, these workshop-style lectures were facilitated by Aida Sabet from LearnAid tutoring, and have reached a total of 37 students.

In late 2021, SNH hosted a youth leadership forum for Victorian Youth Week. Students from nearby schools joined on the day to discuss their experiences and frustrations with secondary education and work together to propose solutions. These insights were followed up by our 2022 forum, 'A Fair Go at High School', which hosted 11 young people from across the Inner North.

SNH staff have integrated into the networks of Moreland Youth Services and have formed a partnership with Youth Projects, whose youth advisory group have provided valuable input as we lay the foundations for our own cohort of young leaders.

The development of our new ACFE course 'Let's Shoot: Intro to Screen and Media' has formed part of our youth engagement initiatives, and students as young as 13 have enrolled in the course to learn about editing software, camera techniques and post-production.

Perhaps our most popular new program has been our video games club, hosted during school holidays. For this event, the SNH computer lab is transformed into a games arcade, with PCs booted up with a variety of games, and gaming consoles such as Xbox and Nintendo Switch connected to the TVs. Kids and teens have given extraordinary positive feedback about this program as a way to socialise and connect with other young people in a friendly, low-pressure environment.

CONTINUED PG 19

ACTIVITY & COURSE REPORTS CONT.

YOUTH PROGRAMS

Our school holiday offerings have included a chess club where participants new to the game come along to learn to play, while more experienced players compete against one another in tournament style. Parents have given positive feedback about the accessibility of both groups to young people with ASD or ADHD.

In the latter half of 2022, SNH youth activities have included outreach to Glenroy College, with SNH staff delivering a short course in animation software to Year 9 media students, as well as a series of leadership workshops to student leaders from years 7- 12.

Another exciting new program is our social group for home educated teens, which provides activities for young people outside of mainstream schooling to connect with each other face-to-face in a friendly community environment, across video games, board games and other activities.

SNH also received a 'JumpStart' grant from VicHealth, with a focus on providing social and recreational opportunities for local children and young people (5-25) with disabilities. This project, beginning in the second half of 2022 and extending into next year, aims to utilise SNH's years of experience with inclusive arts to offer programs to a younger cohort. Central to this new initiative will be a partnership with Glenroy Specialist School. SNH tutors will deliver creative movement and dance classes onsite at the school as part of our outreach efforts. Our highly accessible SNH building and space will be opened up to students who wish to visit for evening and weekend activities such as arts and creative media.

Youth Coordinator,
Campbell Rider



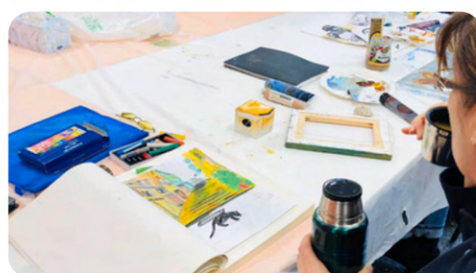
ACTIVITY & COURSE REPORTS CONT.

SOCIAL GROUPS - TUTOR'S REPORTS

ART SPACE

Art Space participants were so happy to resume face to face sessions at Sussex Neighbourhood House in 2022. The pandemic certainly presented us with some challenges. We have had an average of seven participants enrolled this year, but illness – of both participants and their family members – has meant we have very rarely had everyone attend at the same time. We have been very lucky to secure an Australia Post grant, which has enabled us to purchase art and framing supplies to work towards an exhibition in October 2022. As a result of the grant, we have been exploring some new art techniques including pouring paints, mosaics and various paint mediums, and look forward to sharing our work with other house users.

**Art Space Facilitator,
Jennifer Burnett**



BOOK CLUB

We have had some very challenging books this year. We all enjoy reading titles that we would not normally choose. Several very relevant books to Aboriginal and Torres Strait Islander people were read during NAIDOC week/month.

FAMILY HISTORY GROUP

We love our conversations, the venue, and the sharing of knowledge. We also appreciate having access to resources like the internet & printer and being able to share technical advice with each other. Following our session we enjoy a dinner out together at the local RSL.

**Family History & Book Club Facilitator,
Jan Bowles**

ACTIVITY & COURSE REPORTS CONT.

CREATIVE ARTS, LANGUAGE & MUSIC - TUTOR'S REPORTS

SPANISH LANGUAGE

The Clases de Español provide an inclusive, comfortable, fun and safe environment where people are willing to try new things and allow themselves to play and have fun while they learn new skills.

2022 has been a very exciting time for the Spanish team. We have grown from one group in Term 1, to 3 over the course of the year. It's been very rewarding to share the achievements of the students in class and very gratifying to witness their enthusiasm for learning about cultures and traditions in other places of the world.

Our team is always very keen to help and work together with the students in a respectful way.

Muchas gracias!

Spanish Tutor,
Cristina Hernandez Alonso



CLAY ART

It has been fantastic to get our clay handbuilding classes back up and running in a manner that's as Covid-safe as possible. Everyone is happy to have their hands back in clay and making art again. Many thanks to the staff, helpers and volunteers who make it possible.

Participants in our inclusive 'Clay Art for Adults' class have been particularly happy to be back and enjoying each other's company and the creative outlet. We aim to create as friendly an atmosphere as we can and to make creating with clay fun and easy to produce wonderful, colourful art works.

Our 'Clay Art for Kids' class has been really fun with all manner of creations emerging from our young artists' hands. As well as making fabulous art we get to play with clay each week which is really fun.

'Small Objects in Clay' continues to thrive with everyone really enjoying the opportunity to be creative and experience clay. It is such a grounding experience having one's hands in clay which is not only good for your health and wellbeing, but you also get to make cool things.

Clay Art Tutor,
Ursula Dutkiewicz



ACTIVITY & COURSE REPORTS CONT.

HEALTH & WELLBEING - TUTOR'S REPORTS

TAI CHI

This past year has been challenging for Tai Chi participants. We switched to Zoom classes during the many lockdowns, but this did not reach about half the classes who were unable or unwilling to make the transition to online learning. Still, we were able to connect and reach out to some people who were often isolated in their homes, and make some sort of social contact. Swapping stories and experiences formed an essential part of the classes, and everyone mentioned how beneficial it was to talk and practice Tai Chi together, even in the often limited spaces in our homes.

When lockdowns lifted and we were able to meet together again, we were able to reconnect old friendships. However, attendances have been affected by ongoing illnesses and dropping out for some new participants. This trend is concerning, as our mission in the Tai Chi for Health program is to improve mental and physical health by alleviating symptoms of disease (for example, by improving balance and thus preventing falls). The social aspect of coming together, greeting old friends and making new ones, is so important in these troubled times.

Going forward, we hope to expand our Tai Chi classes to offer better health to more people in our community. A good start will be actively targeting specific health problems in our community such as arthritis, osteoporosis or diabetes, where Tai Chi is known to be beneficial.

Tai Chi Instructor,
Averil Lewis

BABY MASSAGE

What a great opportunity it was to teach baby massage and work with new mothers and babies! It was great to see the babies so relaxed after each session.

Teaching baby massage is a rewarding opportunity, it helps promote wellbeing and enhances bonding between infants and their parents. The classes also focus on empowering parents and promoting nurturing through parent-baby communication. I hope the parents will gain as much pleasure and satisfaction from practicing the art of massage as I do from teaching.

Looking forward to facilitating more classes in the future!

Baby Massage Instructor,
Bibha Sharma



ACTIVITY & COURSE REPORTS CONT.

KIDS & YOUTH - TUTOR'S REPORTS

SCALLYWAGS PLAYTIME PRESCHOOL

Sallywags playgroup started back in July 2019.

With a few Covid-19 hiccups along the way, we were back to running our groups at full capacity in 2022.

Our numbers have been amazing. We currently have 15 families attending the morning group, (with a wait list) and we decided to start another group in the afternoon following the morning session. This group is also proving popular. Although not completely full yet, I am confident it soon will be.

Playgroup is a safe, fun and exciting environment for children to come together to play and learn. Some of our activities together are building, water play, sensory play, imaginative play, craft activities, outdoor play and of course coming together on the mat to have a snack to recharge and create a sense of belonging. Each week we end our session by sitting on the mat together to sing some songs, read a book, or have a dance. This is everyone's favourite time. We even have a playgroup mascot called Mr Bumble Bee, who comes out to say hello every time

Of course, playgroup isn't just about the children. It's also a time for families or caregivers to come together, connect, and share stories over a cuppa. Our families have formed strong connections with each other and at times now meet for a catchup/play outside of playgroup.

Sallywags Facilitator

Rose van Herk



PASCOE VALE FOOD COLLECTIVE

AUSPICEE REPORT

The volunteer-managed Pascoe Vale Food Collective (PVFC) is in its second year. We continue to supply wholesome, sustainable food without packaging to the local community during Distribution days, once per month, at the Pascoe Vale Senior Citizens centre. During these uncertain times, the ongoing pandemic has highlighted how critical food security is to a community like ours. With rising costs to families, the PVFC see the work we do as an essential service to the local residents in the area.

Our main focus is to source non-perishable food and cleaning products as local and as ethically as possible, and provide these package-free to our members and the community. As much as possible we try to minimize excessive food miles and excessive packaging, whilst ensuring that growers are reasonably paid for their work. Our vision where the community could meet in a welcoming space, and volunteers and members could help, support, and form new friendships has been rewarding to see.

The PVFC stocks 64 items including flours, rice, pastas, nuts, seeds, vinegars, oil, honey, spices, and some washing and cleaning products. This year, some products were removed and replaced with new products following a poll with our members. Members and casual visitors are able to bring their own containers to be filled with as much or as little as they need. Packaging is minimized and the Collective ensures responsible re-use or recycling of the packaging we receive.

We once again held a Makers' Market in March to celebrate our first year enabling us to support some local businesses. We acknowledge and are grateful to Joe Cassar

for a welcoming speech and cutting of the cake! And of course we continue to be grateful for the wonderful support from the Sussex Neighbourhood House, as we re-signed a new Auspice agreement in May.

Our sales and the volume of shoppers each month remained steady throughout the year. The Covid 19 pandemic and the many restrictions in place may have also been responsible for lack of growth. This financial year we sold \$8,083 worth of products and collected \$1,029 in membership fees. For the same period we outlaid \$7,939 to purchase products. Our bank balance on 30 June was \$3,533. Our membership base for the period was 35.

The committee has experienced a small turnover, as former members have moved out of the area, with most roles being replaced. At the end of June we had 6 members in the committee. We have not applied for any grants this year.

It has continued to be another exciting year, sharing our values relating to care for the earth through a practical approach to reducing consumption of packaged goods. Strengthening connections with the broader community around our shared values is encouraging.

We look forward to the continuing success of the Collective and hope to grow our presence and member base in the future.

CONTINUED PG 25



PASCOE VALE FOOD COLLECTIVE



AUSPICEE REPORT

Acknowledgements and Thanks

We acknowledge Joe Cassar for his kindness and continuous encouraging support.

Thank you also to the SNH Committee of Governance for their continuous support and kindness.

Thank you to Council for allowing us to use the storage space at the hall.

I'd like to thank and acknowledge the PVFC committee for the countless volunteering time they dedicate to keeping us operating each month;

- Angela Gioulekas, our Secretary,
- Heather Wymer, our Treasurer,
- Bec Drake, our Purchasing Manager,
- Joanne Dietrich, our Memberships coordinator, (replacing Lauren Barnao)
- Penny Sekeris, our Volunteers coordinator, (replacing Louise Beaumont),
- Also, Ashleyvan Raaphorst and his wife Beth for our new logo and for help with our socials and marketing.

And lastly, we recognise and are grateful to our members who support us through regular purchases and volunteering efforts on distribution days, full of enthusiasm and lovely words of encouragement.

PVFC Chairperson

Sylvia Lo Piccolo



PASCOE VALE FOOD COLLECTIVE

AUSPICEE FINANCIAL STATEMENT



FINANCIAL STATEMENT FOR THE PERIOD ENDED 30 JUNE 2022

Income	Grants	\$0.00
	Membership fees	\$1,029.00
	Distribution day sales	\$8,083.97
	Total income	\$9,112.97

Less expenses	Equipment	\$0.00
	Printing costs	\$54.97
	Hall hire	\$841.12
	Food licence fee	\$131.28
	Suppliers	\$7,939.98
	Stocktake loss	\$117.47
	Bank and Tyro fees	\$264.98
	Total expenses	\$9,112.97

Surplus/deficit for the year **-\$236.83**

Bank balance at 30 June 2022 \$3,533.65

Treasurer comments

- The period under review includes takings and expenses for the 21-22 financial year. This is our first full year of operation.
- Both membership fees and distribution day sales were significantly higher than last year, as would be expected.
- In general, distribution day sales were higher during lockdown. As lockdown ended attendance at distribution days dropped off. Takings were also lower during the summer months, presumably as more people were on holiday.
- The Makers' Market held to celebrate our first anniversary in March was by far the most successful day, taking \$1371.60. The distribution day with the lowest takings was January with \$340.56.
- Membership fees were decreased due to increased financial sustainability.
- Although we posted a small loss, unlike last year we did not apply for any grants in this financial year. In the coming financial year, we are planning to apply for grants to cover the cost of hiring the hall. If current trends continue, it would allow the PVFC to run at a small profit.

COMMUNITY GROUP REPORTS

COBURG & PASCOE VALE MEN'S SHED

A new community initiative in 2022. Men's Sheds play an important role in the prevention of social isolation and the promotion of positive health and wellbeing amongst men, as well as enabling men to positively (re)connect with their community. SNH is keen to continue supporting the development of this new local Men's Shed initiative.

STRATHMORE MEN'S SHED

The Strathmore Men's Shed generously provide SNH with assistance when needed. They have made many items to help us in our classrooms. We really appreciate their contributions to us and to the broader community.



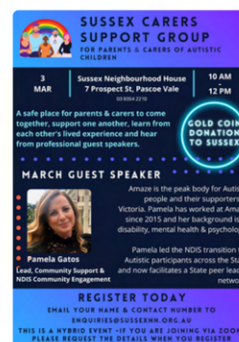
EARTH DAY

We celebrated Earth Day with a special free event bringing the 'Tree is Life - travelling art installation' to the community. Ursula Dutkiewicz presented works with a floor talk, poetry and flute music, followed by light refreshments.



AUTISM CARERS SUPPORT

We provide a meeting space for the Sussex Autism Carers Support Group. The group has grown in numbers and interested participants. The group regularly invites guest speakers to attend.



RISE NORTH

A local community group championing better availability of public-school secondary education in Moreland's north. SNH provide a meeting space and support for local people interested in improving local secondary education opportunities.



BREAD TAGS FOR WHEELCHAIRS

SNH is one of many organisations that collect Bread Tags for Wheelchairs. Thank you to the community for bringing in your bread tags for SNH to donate. Many kilos of bread tags have been collected!



COMMUNITY GROUP REPORTS

PASCOE VALE REPAIR CAFÉ

Another new initiative in 2022. Building on the local community's growing interest in recycling, repair and waste reduction. The Repair Café is a practical way we can all do our bit locally for the environment. Volunteer repairers are always welcome.



EVENTS & PARTNERSHIPS

2021 INCLUSIVE GET TOGETHER

December 2021 saw the coming together of our participants with a disability, their family and friends to meet and have a chance to catch up after a long absence from SNH due to Covid-19. Food and fun was enjoyed by all with Simone, Angela and Tiffeny enjoying the opportunity of once again being with long term participants and their families and friends.



2021 END OF YEAR GATHERING

A simple celebration was had in December 2021 to celebrate the return to SNH and the festive season. It was great to see so many faces return to the house after such a long period of time. Thank you to everyone who came, helped and celebrated with us.



2022 VOLUNTEERS MORNING TEA

In May 2022, during National Volunteers Week, we celebrated our wonderful volunteers by holding a morning tea in their honour. We truly appreciate all that they give to us, the participants, and the community as a whole. We would not be able to offer what we do without you.



2022 WINTER SOLSTICE

The Winter Solstice event celebrated the rich cultural diversity of our community. Attendance at the event was beyond expectations and thoroughly enjoyed by all. Our wonderful Sussex Skylarks choir performed as well as the Gruppo Culturale Italiano Choir. Both performances, as always, were exceptional. A big thank you to all those who came and participated in the event as well as those who helped make this happen.



EVENTS & PARTNERSHIPS CONT.

OLDER ITALIAN BOOSTER EVENT

This event was made possible through Moreland City Council funding, and held in conjunction with the Puglia Club whose tremendous efforts facilitated the organisation and running of the event. Aimed at older Italian residents of Moreland, the music and lunch provided incentive for citizens to attend the pop-up booster clinic at the Pascoe Vale Community Centre and in turn increase the booster rates of this population group. The event was a huge success with over 120 people attending, with speeches from Labor MP Candidate Anthony Cianflone, and Honorary President of the Federation of the Ethnic Communities Councils of Australia and representative of the Pugliese Federation, Joe Caputo. Musical performances were conducted by J&C Duo - a two-piece Italian band - and the Gruppo Culturale Italiano choir who meet at Sussex every Friday.



BUNNINGS COBURG

Bunnings Coburg helped support SNH this year with school holiday workshops, an International Womens' Day event and by providing art equipment for our social art group, Art Space.

The school holiday activity, Birdhouses with Bunnings, was a marvellous success with many birdhouses being built and decorated.



ACKNOWLEDGEMENTS

THANK YOU

We have many organisations to thank for working and helping us over the year.

We would like to sincerely thank our local members for all their support.

Hon Lizzie Blandthorn MP, State Member for Pascoe Vale
Hon Peter Khalil MP, Federal Member for Wills

We acknowledge the support of our local councillors and council staff, including the co-located Maternal & Child Health Service. We greatly appreciate the support, advice and advocacy work of the Northwest Neighbourhood House Network and Neighbourhood Houses Victoria.

Finally, we would like to thank our funding bodies for making possible the numerous programs and activities we provide to the local community.

Department of Families, Fairness and Housing Victoria
Department of Education and Training Victoria
Moreland City Council
The Victoria Health Foundation - VicHealth
Australia Post - Supporting Communities



SUSSEX NEIGHBOURHOOD HOUSE INC

ABN 45 620 743 392

**SPECIAL PURPOSE FINANCIAL REPORT
FOR THE YEAR ENDED 30 JUNE 2022**

SUSSEX NEIGHBOURHOOD HOUSE INC
ABN 45 620 743 392

CONTENTS	PAGE
Committee's Report	1
Income and Expenditure Statement & Statement of Comprehensive Income	2
Statement of Financial Position	4
Statement of Changes in Equity	5
Statement of Cash Flows	6
Notes to the Statement of Cash Flows	6
Notes to the Financial Statements	7
Statement by Members of the Committee	9
Independent Auditor's Report	10
Certificate by Members of the Committee	12

SUSSEX NEIGHBOURHOOD HOUSE INC
ABN 45 620 743 392
COMMITTEE'S REPORT

Your committee members present the special purpose financial report on the entity for the financial year ended 30 June 2022.

Committee of Governance Members

The names of committee of governance members at the date of this report are:

Lara Denes	Chairperson	
Ruth Robles McColl	Deputy Chairperson	
Angela Collier-Gioulekas	Secretary	
Elisabeth Ta	Treasurer	
Claire Martin	General Board Member	
Preet Toki	General Board Member	
Yvette Jones	General Board Member	
Carl Roberts	General Board Member	Resigned April 2022

Principle Activities

The principle activities of the entity during the financial year were:

Sussex Neighbourhood House is a community hub committed to providing lifelong learning through social activities that are inclusive, accessible and sustainable for the local community. We offer a range of activities suitable for all ages and abilities.

Significant Changes

No significant changes in the nature of the entity's activity occurred during the financial year.

Operating Results

The deficit for the year attributable to the entity amounted to \$4,619 (2021: \$58,907 - surplus).

After Balance Date Events

A matter has continue to evolve since 30 June 2022 that has significantly affected, or may significantly affect:

- (a) the entity's operations in future financial years, or
- (b) the results of those operations in future financial years, or
- (c) the entity's state of affairs in future financial years.

The COVID19 pandemic may induce significant changes in the state of affairs of the association during the financial period ended 30 June 2023. The committee members will take all necessary measures to preserve capital and shepherd the association through this uncertain period.

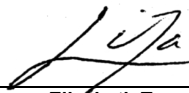
Signed in accordance with a resolution of the Members of the Committee.

Chairperson



Lara Denes

Treasurer



Elisabeth Ta

Dated this

3rd day of October, 2022

SUSSEX NEIGHBOURHOOD HOUSE INC
ABN 45 620 743 392
INCOME AND EXPENDITURE STATEMENT FOR THE YEAR ENDED 30 JUNE 2022

	2022 \$	2021 \$
INCOME		
Grant Funding Income		
Local Government Grants	72,360	69,348
State Government Grants - NHCP	143,354	139,055
State Government Grants - ACFE	71,093	70,030
State Government Grants - Other	33,028	6,500
Other Grants	38,353	3,000
	358,188	287,933
Operating Income		
Program/ Course Fees Income	74,992	62,544
Facility Room Hire Income	48,436	26,175
Student Administration Fees	-	20
	123,428	88,739
Other Income		
Interest Received	98	542
COVID-19 Government Assistance Payments: Cash Flow Boost	-	26,175
COVID-19 Government Assistance Payments: JobKeeper	-	172,750
COVID-19 Government Assistance Payments: Business Support Fund	54,400	18,743
Donations	2,080	1,483
Other Income	3,559	-
	60,137	219,693
TOTAL INCOME	541,753	596,365
EXPENDITURE		
Administrative & Operating Expenses		
Administration Fees	2,360	1,030
Assets write offs	-	3,951
Audit and Bookkeeping Fees	2,000	1,950
Bad Debts	-	856
Bank Fees and Charges	318	366
Board Meeting Expenses	378	-
Cleaning	8,674	29,141
Computer and IT Services	13,859	10,501
Depreciation	4,809	775
Fundraising & Donations Expenses	50	-
Furniture and Equipment	2,784	-
Insurance	815	615
Membership Fees & Permits	1,848	4,432
Office Supplies	-	45
Postage, Advertising & Delivery	1,949	965
Photocopier and Printing	2,478	3,620
Rent	-	1,713
Repairs and maintenance	2,224	-
Telephone & Internet	3,906	4,107
Utilities - Electricity, Gas and Water	5,341	8,750
	53,793	72,817

SUSSEX NEIGHBOURHOOD HOUSE INC
ABN 45 620 743 392
INCOME AND EXPENDITURE STATEMENT FOR THE YEAR ENDED 30 JUNE 2022

	2022	2021
	\$	\$
Employee Related Expenses		
Salaries & Wages	358,925	312,298
Superannuation	33,941	20,255
Annual leave and Long Service Leave Expenses	332	(2,808)
Payroll Expenses	119	-
Portable Long Service Benefits Scheme Levies	5,556	461
Recruitment	532	12,682
Staff Gifts and Amenities	1,367	1,092
Training and Development	-	418
WorkCover	4,698	3,759
	<u>405,470</u>	<u>348,157</u>
Program Expenses		
Program Fees - Event Costs	915	748
Program Fees - Fuel	-	67
Program Fees - Materials	14,567	7,879
Program Fees - Subcontractors	70,897	107,789
Program Fees - Volunteer Expenses	730	-
	<u>87,109</u>	<u>116,483</u>
TOTAL EXPENDITURE	<u>546,372</u>	<u>537,457</u>
NET SURPLUS/(DEFICIT) FOR THE YEAR	<u>(4,619)</u>	<u>58,908</u>

SUSSEX NEIGHBOURHOOD HOUSE INC
ABN 45 620 743 392
STATEMENT OF COMPREHENSIVE INCOME FOR THE YEAR ENDED 30 JUNE 2022

	2022	2021
	\$	\$
NET SURPLUS/(DEFICIT) FOR THE YEAR	(4,619)	58,908
Other Comprehensive Income for the Year	-	-
NET SURPLUS/(DEFICIT) ATTRIBUTABLE TO THE ASSOCIATION	<u>(4,619)</u>	<u>58,908</u>

SUSSEX NEIGHBOURHOOD HOUSE INC
ABN 45 620 743 392
STATEMENT OF FINANCIAL POSITION AS AT 30 JUNE 2022

	2022	2021
	\$	\$
CURRENT ASSETS		
Cash at Bank	243,221	253,969
Cash on Hand	520	260
Cash at Term Deposits	111,531	111,433
Accounts Receivable	83	1,540
Other Receivables	20,561	-
Prepayments	-	253
TOTAL CURRENT ASSETS	375,916	367,455
NON-CURRENT ASSETS		
Computer Equipment	22,463	-
Less Accumulated Depreciation	(4,809)	-
	17,654	-
TOTAL NON-CURRENT ASSETS	17,654	-
TOTAL ASSETS	393,570	367,455
CURRENT LIABILITIES		
Accounts Payable	9,322	5,935
Sundry Payables	2,393	962
ATO GST Payable	15,593	5,355
ATO PAYGW Payable	4,684	7,704
Superannuation Payable	2,638	-
Fees Received in Advance	47,306	51,375
Funds under Auspice Arrangements	3,816	3,492
Grants Received in Advance	42,000	22,528
Provision for Annual Leave	14,815	10,353
Provision for Long Service Leave	2,910	10,886
TOTAL CURRENT LIABILITIES	145,477	118,590
NON-CURRENT LIABILITIES		
Provision for Long Service Leave	3,847	-
TOTAL NON-CURRENT LIABILITIES	3,847	-
TOTAL LIABILITIES	149,324	118,590
NET ASSETS	244,246	248,865
EQUITY		
Accumulated Funds	244,246	248,865
	244,246	248,865

The Statement of Financial Position is to be read in conjunction with the audit report
and the notes to the financial statements.

SUSSEX NEIGHBOURHOOD HOUSE INC
ABN 45 620 743 392
STATEMENT OF CHANGES IN EQUITY FOR THE YEAR ENDED 30 JUNE 2022

	Accumulated Members Funds \$	Total \$
Balance as at 1 July 2020	189,957	189,957
Surplus/ (Deficit) attributable to the Association	58,908	58,908
Balance as at 30 June 2021	<u>248,865</u>	<u>248,865</u>
Surplus/ (Deficit) attributable to the Association	(4,619)	(4,619)
Balance as at 30 June 2022	<u><u>244,246</u></u>	<u><u>244,246</u></u>

The Statement of Changes in Equity is to be read in conjunction with the audit report and the notes to the financial statements.

SUSSEX NEIGHBOURHOOD HOUSE INC
ABN 45 620 743 392
STATEMENT OF CASH FLOWS FOR THE YEAR ENDED 30 JUNE 2022

	Note	2022 \$	2021 \$
CASH FLOWS FROM OPERATING ACTIVITIES			
Receipts from grant funding		339,084	336,756
Receipts from customers		138,831	107,821
Receipts from other sources		60,039	219,151
Payments to suppliers and employees		(525,979)	(538,665)
Interest received		98	542
Net cash generated from/(used in) operating activities	(i)	12,073	125,605
CASH FLOWS FROM INVESTING ACTIVITIES			
Payments for property, plant and equipment		(22,463)	-
Net cash (used in)/provided by investing activities		(22,463)	-
Net increase/(decrease) in cash held		(10,390)	125,605
Cash and cash equivalents at beginning of financial year		365,662	240,057
Cash and cash equivalents at end of financial year	(ii)	355,272	365,662

SUSSEX NEIGHBOURHOOD HOUSE INC
ABN 45 620 743 392
NOTES TO THE STATEMENTS OF CASH FLOWS FOR THE YEAR ENDED 30 JUNE 2022

	2022 \$	2021 \$
Note (i). Net cash generated from/(used in) operating activities		
Net surplus for the year	(4,619)	58,908
Non-cash flow item: depreciation	4,809	775
(Increase)/decrease in trade and other receivables	(19,104)	48,823
(Increase)/decrease in prepayments	253	256
Increase/(decrease) in trade and other payables	14,674	4,067
Increase/(decrease) in income received in advance	15,403	19,082
Increase/(decrease) in funds under Auspice arrangements	324	(103)
Increase/(decrease) in provisions	333	(6,203)
	12,073	125,605
Note (ii). Cash and cash equivalents at end of financial year		
Cash on hand	243,221	253,969
Cash at bank	520	260
Cash on deposit	111,531	111,433
	355,272	365,662

The Statement of Cash Flows is to be read in conjunction with the audit report
and the notes to the financial statements.

SUSSEX NEIGHBOURHOOD HOUSE INC
ABN 45 620 743 392
NOTES TO THE FINANCIAL STATEMENTS FOR THE YEAR ENDED 30 JUNE 2022

Note 1. Statement of Significant Accounting Policies

This financial report includes the financial statements and notes of Sussex Neighbourhood House Inc, an incorporated association, which is incorporated in Victoria under the Associations Incorporation Reform Act 2012.

Basis of preparation

This financial report is a special purpose financial report prepared in order to satisfy the financial reporting requirements of the *Australian Charities and Not for Profits Commission Act 2012* and the *Associations Incorporation Reform Act 2012*. The committee has determined that the association is not a reporting entity and also a not-for-profit association.

The financial report has been prepared on an accruals basis and is based on historical costs, modified, where applicable, by the measurement at fair value of selected non-current assets, financial assets and financial liabilities.

The following is a summary of the material accounting policies adopted by the company in the preparation of the general purpose financial report. The accounting policies have been consistently applied, unless otherwise stated.

Accounting Policies

a. Property, Plant and Equipment

Each class of property, plant and equipment is carried at cost or fair value less, where applicable, any accumulated depreciation and impairment losses.

Plant and Equipment

Plant and equipment are measured on the cost basis less depreciation and impairment losses.

The carrying amount of plant and equipment is reviewed annually by directors to ensure it is not in excess of the recoverable amount from these assets. The recoverable amount is assessed on the basis of the expected net cash flows that will be received from the assets' employment and subsequent disposal. The expected net cash flows have been discounted to their present values in determining recoverable amounts.

Subsequent costs are included in the asset's carrying amount or recognised as a separate asset, as appropriate, only when it is probable that future economic benefits associated with the item will flow to the company and the cost of the item can be measured reliably. All other repairs and maintenance are charged to the income statement during the financial period in which they are incurred.

Depreciation

The depreciable amount of all fixed assets are depreciated over the useful lives of the assets to the Committee commencing from the time the asset is held ready for use.

The asset's residual values and useful lives are reviewed and adjusted, if appropriate, at each balance date.

An asset's carrying amount is written down immediately to its recoverable amount if the asset's carrying amount is greater than its estimated recoverable amount.

Gains and losses on disposals are determined by comparing proceeds with the carrying amount. These gains and losses are included in the income statement.

b. Cash and Cash Equivalents

Cash and cash equivalents include cash on hand, deposits held at-call with banks, other short-term highly liquid investments with original maturities of three months or less, and bank overdrafts. Bank overdrafts are shown within borrowings in current liabilities on the balance sheet.

SUSSEX NEIGHBOURHOOD HOUSE INC
ABN 45 620 743 392
NOTES TO THE FINANCIAL STATEMENTS FOR THE YEAR ENDED 30 JUNE 2022

Note 1. Statement of Significant Accounting Policies (*continued*)

c. Revenue

Grants are recognised at fair value where there is reasonable assurance that the grant will be received and all grant conditions will be met. Grants relating to expense items are recognised as income over the periods necessary to match the grant to the costs they are compensating.

Grants received for specific programs are recognised as income only to the extent of work completed on those projects when the terms of the grants stipulate that any unexpended funds are to be returned to the sponsor if the program is not completed. In those circumstances the funds attributable to work still to be completed are carried forward as grants income deferred.

Revenue is measured at the fair value of the consideration received or receivable.

Revenue from the sale of goods is recognised at the point of delivery as this corresponds to the transfer of significant risks and rewards of ownership of the goods and the cessation of all involvement in those goods.

Interest revenue is recognised on a proportional basis taking into account the interest rates applicable to the financial assets.

Revenue from the rendering of a service is recognised upon the delivery of the service to the customers.

All revenue is stated net of the amount of goods and services tax (GST).

d. Income Tax

By virtue of its aims as set out in the constitution, the Association qualifies as an organisation specifically exempt from income tax under Section 50-45 of the *Income Tax Assessment Act 1997*.

e. Goods and Services Tax (GST)

Revenues, expenses and assets are recognised net of the amount of GST, except where the amount of GST incurred is not recoverable from the Australian Taxation Office. In these circumstances the GST is recognised as part of the cost of acquisition of the asset or as part of an item of expense. Receivables and payables in the Balance Sheet are shown inclusive of GST.

f. Employment Entitlements

Provision is made for the Association's liability for employee benefits arising from services rendered by employees to balance date. Employee benefits that are expected to be settled within one year have been measured at the amount expected to be paid when the liability is settled. Contributions are made by the association to employee superannuation fund and are charged as expenses when incurred.

g. Provisions

Provisions are recognised when the Association has a legal or constructive obligation, as a result of past events, for which it is probable that an outflow of economic benefits will result and that outflow can be reliably measured.

SUSSEX NEIGHBOURHOOD HOUSE INC
ABN 45 620 743 392
STATEMENT BY MEMBERS OF THE COMMITTEE

The committee has determined that the association is not a reporting entity and that this special purpose financial report should be prepared in accordance with the accounting policies outlined in Note 1 to the financial statements.

In the opinion of the committee, the financial report as set out on pages 2 to 8, satisfy the requirements of the Australian Charities and Not-for-profits Commission Act 2012 and:

- 1 a. comply with Australian Accounting Standards applicable to the association; and
b. give a true and fair view of the financial position of Sussex Neighbourhood House Inc as at 30 June 2022 and its performance for the year ended on that date.
- 2 At the date of this statement, there are reasonable grounds to believe that Sussex Neighbourhood House Inc will be able to pay its debts as and when they fall due.

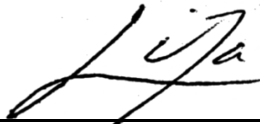
This declaration is signed in accordance with subsection 60.15(2) of the Australian Charities and Not-for-profits Commission Regulation 2013.

Chairperson



Lara Denes

Treasurer



Elisabeth Ta

Dated:

3 October, 2022



Collins & Co Audit Pty Ltd

127 Paisley Street
Footscray VIC 3011
Australia

Phone (03) 9680 1000
Fax (03) 9689 6605

www.collinsco.com.au

SUSSEX NEIGHBOURHOOD HOUSE INC A.B.N. 45 620 743 392 INDEPENDENT AUDITOR'S REPORT TO THE MEMBERS

Opinion

I have audited the accompanying financial report of Sussex Neighbourhood House Inc (the Association), which comprises the balance sheet as at 30 June 2022, and the income statement, statement of changes in equity and cash flow statement for the year ended on that date, a summary of significant accounting policies and other explanatory notes and the statement by the members of the Board.

In my opinion, the financial report of the Association is in accordance with *the Australian Charities and Not for Profits Commission Act 2012* and *the Associations Incorporation Reform Act 2012*, including:

- i. giving a true and fair view of the Association's financial position as at 30 June 2022 and of its performance for the year ended; and
- ii. complying with Australian Accounting Standards as per Note 1, *the Australian Charities and Not for Profits Commission Act 2012* and *the Associations Incorporation Reform Act 2012*.

Basis for Opinion

I conducted my audit in accordance with Australian Auditing Standards. My responsibilities under those standards are further described in the Auditor's Responsibilities for the Audit of the Financial Report section of our report. I am independent of the Association in accordance with the ethical requirements of the Accounting Professional and Ethical Standards Board's APES 110 Code of Ethics for Professional Accountants (the Code) that are relevant to my audit of the financial report in Australia. I have also fulfilled our other ethical responsibilities in accordance with the Code.

I believe that the audit evidence I have obtained is sufficient and appropriate to provide a basis for my opinion.

Emphasis of Matter - Basis of Accounting and Restriction on Distribution

I draw attention to Note 1 to the financial report, which describes the basis of accounting. The financial report has been prepared to assist Sussex Neighbourhood House Inc to meet the requirements of the *Australian Charities and Not for Profits Commission Act 2012* and *the Associations Incorporation Reform Act 2012*. As a result, the financial report may not be suitable for another purpose. My opinion is not modified in respect of this matter.

Responsibilities of Management and Those Charged with Governance for the Financial Report

Management is responsible for the preparation and fair presentation of the financial report in accordance with the financial reporting requirements of the applicable legislation and for such internal control as management determines is necessary to enable the preparation and fair presentation of a financial report that is free from material misstatement, whether due to fraud or error.

In preparing the financial report, management is responsible for assessing the Association's ability to continue as a going concern, disclosing, as applicable, matters relating to going concern and using the going concern basis of accounting unless management either intends to liquidate the Entity or to cease operations, or has no realistic alternative but to do so.

Those charged with governance are responsible for overseeing the Association's financial reporting process.



Collins & Co Audit Pty Ltd

127 Paisley Street
Footscray VIC 3011
Australia

Phone (03) 9680 1000
Fax (03) 9689 6605

www.collinsco.com.au

Auditor's Responsibilities for the Audit of the Financial Report

My objectives are to obtain reasonable assurance about whether the financial report as a whole is free from material misstatement, whether due to fraud or error, and to issue an auditor's report that includes our opinion. Reasonable assurance is a high level of assurance but is not a guarantee that an audit conducted in accordance with Australian Auditing Standards will always detect a material misstatement when it exists. Misstatements can arise from fraud or error and are considered material if, individually or in the aggregate, they could reasonably be expected to influence the economic decisions of users taken on the basis of the financial report.

As part of an audit in accordance with Australian Auditing Standards, I exercise professional judgement and maintain professional scepticism throughout the audit. I also:

- Identify and assess the risks of material misstatement of the financial report, whether due to fraud or error, design and perform audit procedures responsive to those risks, and obtain audit evidence that is sufficient and appropriate to provide a basis for my opinion. The risk of not detecting a material misstatement resulting from fraud is higher than for one resulting from error, as fraud may involve collusion, forgery, intentional omissions, misrepresentations, or the override of internal control.
- Obtain an understanding of internal control relevant to the audit in order to design audit procedures that are appropriate in the circumstances, but not for the purpose of expressing an opinion on the effectiveness of the registered entity's internal control.
- Evaluate the appropriateness of accounting policies used and the reasonableness of accounting estimates and related disclosures made by the responsible entities.
- Conclude on the appropriateness of the responsible entities use of the going concern basis of accounting and, based on the audit evidence obtained, whether a material uncertainty exists related to events or conditions that may cast significant doubt on the registered entity's ability to continue as a going concern. If I conclude that a material uncertainty exists, I am required to draw attention in my auditor's report to the related disclosures in the financial report or, if such disclosures are inadequate, to modify my opinion. My conclusions are based on the audit evidence obtained up to the date of my auditor's report. However, future events or conditions may cause the registered entity to cease to continue as a going concern.
- Evaluate the overall presentation, structure and content of the financial report, including the disclosures, and whether the financial report represents the underlying transactions and events in a manner that achieves fair presentation.

I communicate with those charged with governance regarding, among other matters, the planned scope and timing of the audit and significant audit findings, including any significant deficiencies in internal controls that I identify during my audit.

Auditor: Frederik Ryk Ludolf Eksteen

ASIC Registration Number: 421448

Address: Collins & Co Audit Pty Ltd, 127 Paisley Street, FOOTSCRAY VIC 3011

Signature:

Date: 4 October 2022

CONTACT US

7 Prospect Street, Pascoe
Vale, 3044



03 9354 2210



enquiries@sussexnh.org.au



www.sussexnh.org.au



[@SussexNeighbourhoodHouse](https://www.facebook.com/SussexNeighbourhoodHouse)



[@sussexneighbourhoodhouse](https://www.instagram.com/sussexneighbourhoodhouse)



[/sussex-neighbourhood-house-inc](https://www.linkedin.com/company/sussex-neighbourhood-house-inc)

